



Eagle Plains Resources Ltd.
(CDNX: EPL.V)

(Type of) Research Report

Shailesh Dhuri, MBA
May 26, 2006

Symbol (CDNX):	EPL.V	Nine Months Ending March				
Recent Price:	1.47	Year	E/S	PER	REVS	PSR
Avg. Daily Vol. (3-Month):	90,451	31/12/2005	NA	NA	NA	NA
Industry	Mining & Exploration	31/12/2006	NA	NA	NA	NA
12 Month Target Valuation:		2003E	NA	NA	NA	NA
Market Capitalization (\$mn):	72.19	2004E	NA	NA	NA	NA
Capitalization:		Estimated 2002- 2005 Annualized				
Shares O/S (mn):	46.873	Growth Rate:	NA			
Cash & Equiv (\$ mn):	8.5	Dividend:	NA			
Net Working Capital:	3,732,227	Yield:	NA			
Long-term Debt:	NA	Insider Ownership:	NA			
Shareholders Equity	9,289,649	Rating:	Speculative Buy /4			

1. Company Highlights

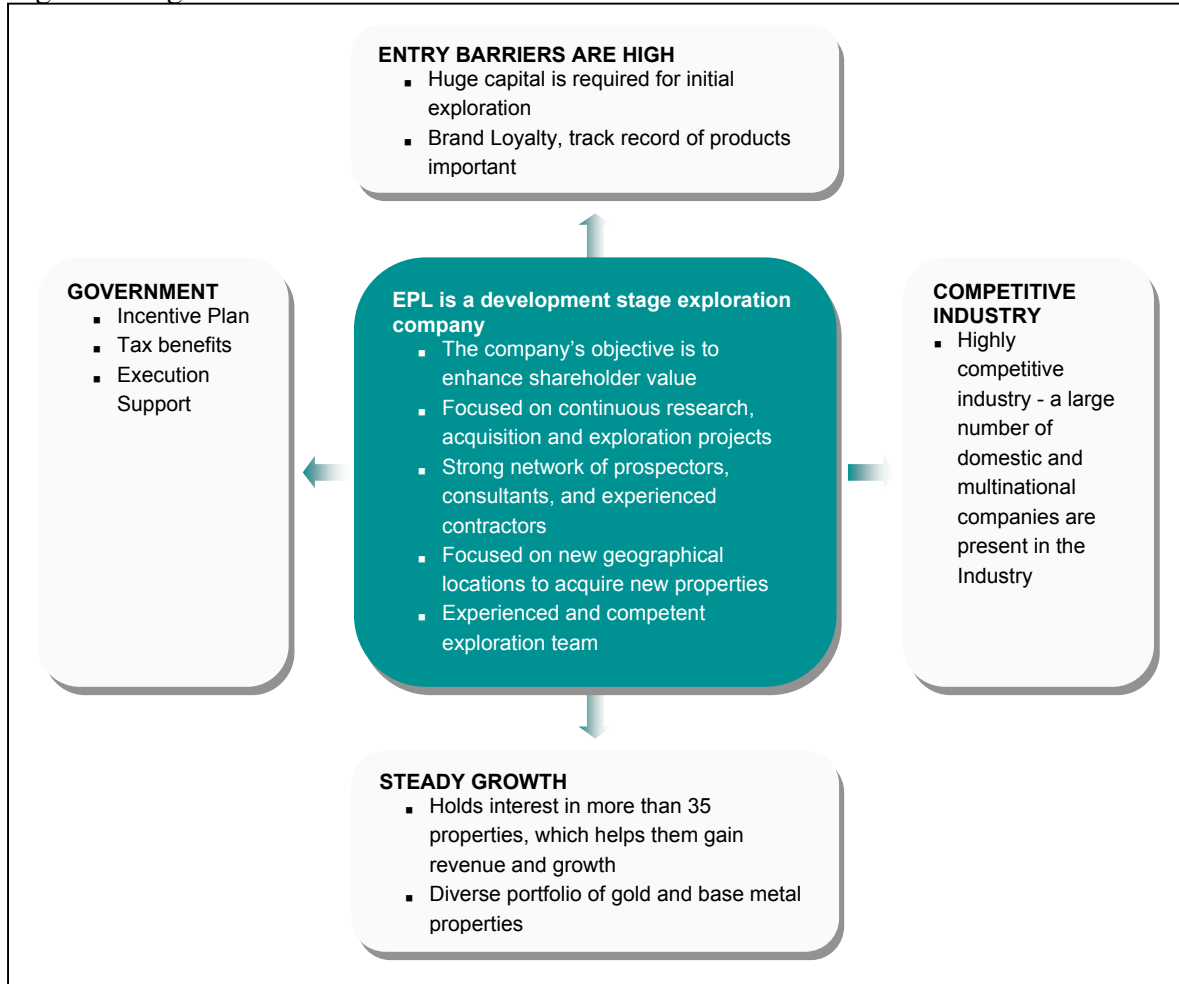
- Eagle Plains Resources Ltd. (EPL) holds interests in over 35 gold, silver, copper, lead, zinc, uranium and molybdenum properties. Three of these are currently under joint venture or option – exposing Eagle Plains to over \$8.5 million in mineral exploration over the next 4 years.
- Option or Joint Venture partners include NovaGold Resources Inc., Alexco Resource Corp., Blind Creek Resources Ltd., Golden Cariboo Resources Inc. and Solomon Resources Ltd. (Source: Eagle Plains)
- Eagle Plains recently announced a “plan of arrangement” to spin-off, on a one for one basis, its Copper Canyon property which holds an Inferred Resource of 1.16 billion pounds of copper, 37.9 million ounces of silver and 2.86 million ounces of gold.
- Collectively Eagle Plains’ Copper Canyon, Sphinx, Blende and Abo properties have a metals in-ground value of approximately \$10.945 billion at May 11, 2006 metal prices. (Source: Eagle Plains)
- EPL has an ambitious and diversified exploration program and is debt free with over \$8.5 million in cash and current investments.

2. Eagle Plains Resources Ltd

2.1 Company Overview

Eagle Plains Resources Ltd. is a development stage exploration company exploring for minerals in British Columbia, Yukon and the Northwest Territories. The Company's focus is on identifying and securing early-stage exploration opportunities in gold, silver, uranium and base metals, and then attracting joint venture interest to leverage their development. The Company's wholly owned subsidiary Bootleg Exploration Inc. is responsible for carrying out exploration activities at all of Eagle Plains' mineral properties.

Figure 1: Eagle Plains Resources Ltd.



Source: Company Website

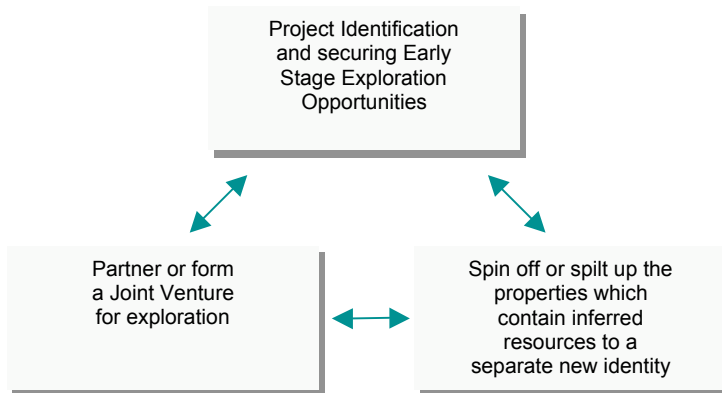
The Company's objective is to enhance shareholder value by identifying and securing development stage exploration and development opportunities in gold, silver, uranium and base metal projects. The Company continues to conduct research, acquisition and exploration in western Canada. Through a network of prospectors, consultants and experienced contractors in addition to seasoned employees and a well-rounded Board of Directors, the Company has assembled a diverse portfolio of gold, uranium and base-metal properties. Presently, the company controls over 35 gold and base metal projects and deposits, 3 of which are under joint venture or option, exposing Eagle Plains to over \$8.5 million in exploration over the next four years. In recent years, Eagle Plains has

completed agreements with Billiton, Rio Algom, Kennecott, NovaGold, Viceroy and numerous other junior exploration companies, resulting in nearly 30,000m (100,000) of drilling and over \$9 million in exploration spending on its properties since 1998. Eagle Plains has demonstrated a proven ability to research, acquire, explore and partner properties of merit, while remaining debt free with over \$8.5 million in cash and current investments.

2.2 Business Strategy

EPL is a junior exploration company and follows the generative exploration model which, we believe, is the best business plan for most of the start-up exploration companies. According to the model, the strategy is to acquire ground at low cost, then vend an interest to another company, ideally the one with enough cash to proceed/take the exploration of the property to the point where a resource is identified. The junior company gets to have a share in any upside that might come from further exploration while preserving its cash, which can be deployed in the hunt for new projects. If the project is successful, the company can minimize shareholder dilution. Further, it can also reduce the risk of spending excessive capital on a single property and increase the odds of success: each new prospect the company generates is a potential source of revenue which ultimately helps in increasing shareholder value.

Figure 2: Business Portfolio of Eagle Plains Resources Ltd.



Source: Analyst Research

Eagle Plains has also used the generative model to build a portfolio of over 35 exploration targets in areas including British Columbia, Yukon, Northwest Territories and Saskatchewan. Following the generative model, EPL then options its projects to joint venture partners who have an opportunity to earn in on one or more of the properties by committing to a specified amount of exploration work within a certain time frame and issuing EPL cash and shares. Projects generated by EPL have been optioned by Billiton Metals Canada, Rio Algom Exploration, Kennecott Canada Exploration, NovaGold Inc., Viceroy Resource Corp. and numerous other junior exploration companies.

EPL's second strategy is to spin-off properties as they advance to the point of interest of commercial producers.

2.3 Description of Various Projects

2.3.1 Copper Canyon Property

Eagle Plains' Copper Canyon property is optioned to NovaGold Resources and is part of their Galore Creek project, one of the largest gold-silver-copper systems in North America. The latest reports from NovaGold, which combine inferred, indicated and measured resources for both Copper Canyon and Galore Creek, tallied a total estimated reserve of 13.75 million ounces of gold, 156.4 million ounces of silver and 12 billion pounds of copper.

In January 2005, NovaGold announced results on EPL's Copper Canyon property, outlining an inferred resource estimate of 2.86 million ounces of gold, 37.9 million ounces of silver and 1.16 billion pounds of copper. Using metal prices of US\$410/oz gold; \$6.40/oz silver; \$1.35/lb copper, the inferred resource from 21 drill holes represents an estimated contained metal in ground value of US\$2.9 billion, with the deposit open in all directions. NovaGold is earning-in on a 60% interest, by completing \$3 million in exploration over the next three years, issuing 296,000 shares and making cash payments of \$250,000. NovaGold can increase its interest to 80% by paying \$1 million and completing a feasibility study by 2011. Eagle Plains does not have to advance any funds to retain its 20% through to production.

The company estimation for Copper Canyon Property is represented below:

Exhibit: Copper Property Value

Mineral	Total Property	Price/Unit (\$)	Total Value (B) (\$)
Copper	1.16b lbs	3.43	3.9788
Gold	2.86mn oz	680	1.9448
Silver	37.9mn oz	13.8	0.52302

Source: Eagle Plains

2.3.2 Blende Property

The Company entered into an option agreement with Blind Creek Resources Ltd. whereby Blind Creek may earn a 60% interest in the Company's wholly owned Blende property, a silver/base-metal deposit located in the Wernecke Mountains - approximately 65 miles north east of Keno in central Yukon Territory - by completing \$5,000,000 in exploration expenditure, issuing to the Company 1,000,000 common shares, and making \$250,000 in cash payments to the Company by December 31, 2010.

In 2005, one of several Eagle Plains field crews had mapped, re-logged, and resource modeled EPL's Blende silver-zinc-lead deposit which holds and inferred resource of at least 38 million ounces of silver, 1.3 billion pounds of zinc and 1.2 billion pounds of lead. This effort resulted in a recently announced joint venture with Blind Creek Resources Ltd. The company estimation for Blende Property is represented below:

Exhibit: Blende Property Value

Mineral	Total Property	Price/Unit (\$)	Total Value (B) (\$)
Zinc	1.3b lbs	1.52	1.976
Lead	1.18 lbs	0.53	0.6254
Silver	38mn oz	13.8	0.52302

Source: Eagle Plains

In 2006, Blind Creek Resources plans an aggressive drill program of 30,000 ft at the Blende.

2.3.3 Sphinx Property - Molybdenum

Eagle Plains may have another winner in their 100% interest Sphinx molybdenum property located 60 km west of Kimberley, BC. In July 2005, EPL completed its Phase 1 drilling program that included 14 holes and 10,921' (3,330m) of drilling in an area measuring approximately 400m x 1000m. Most holes intersected significant molybdenum mineralization open to depth and along strike in one direction. Analytical results include 47m grading .10% Mo (.167% MoS₂). The large, road-accessible land package is currently serviced by hydro-electric power and includes land suitable for mine infrastructure and tailings areas. The company estimation for

The Company in its recently submitted technical report, outlines an inferred resource of 62,005,615 tonnes grading .035% Mo, using a cut-off grade of .01% Mo. This current inferred resource represents 47,844,630 lbs of contained molybdenum metal.

Sphinx Property is represented below:

Exhibit: Sphinx Property Value

Mineral	Total Property	Price/Unit (\$)	Total Value (B) (\$)
Molybdenum	47,844,630 lbs	\$25	1.196

Source: Eagle Plains

2.3.4 Coyote Creek Property – Gypsum

Eagle Plains has just completed a 10 hole drilling program on its 100% interest gypsum property, where showings are exposed over widths of 25-30 meters, containing gypsum in excess of 87% purity and estimated in historical reports “to have a combined potential of 6 million tonnes of gypsum”. Eagle Plains management anticipates improving markets for wallboard in light of recent natural disasters in the US the gypsum potential of the property has never been systematically evaluated. Hydro-electric power and rail transportation are located 15 kms away from property boundaries.

2.3.5 Kalum and Elsiar (LCR) Properties

Kalum gold project consists of over 30 high grade gold-silver vein occurrences covering an area of approximately 10 kms x 12 kms located northwest of Terrace, near the central coast of British Columbia. Eagle Plains has sole ownership of the claims, representing the first time the mineral showings have been consolidated by a single owner. In 2003, EPL completed a significant exploration program that defined numerous new, high grade zones of gold-silver mineralization. In 2004, the Company completed a 19 hole drill program which confirmed the widespread existence of high grade gold systems. In 2005, a 1000 metre, 4-hole program was completed targeting high grade mineralization discovered in the Hat showing area. Drilling has also been completed on the nearby LCR project, owned 100% by Eagle Plains. To date, approximately 2,500 metres (8,100’) of drilling has been completed in 20 holes.

2.3.6 Bar Project

The Company negotiated a purchase agreement with Golden Carboo Resources Ltd. whereby Golden Cariboo purchased 100% of the property in consideration for 550,000 shares of Golden Cariboo, valued at \$65,000.

2.3.7 Other Significant Land Positions

In the East Kootenay region of BC, Eagle Plains holds a significant land position with 100% interest in numerous mineral properties with Sullivan-type lead zinc base metal potential. Programs carried out by Eagle Plains and its partners since 1997 have resulted in over \$2,500,000 in exploration and 24,000 feet of diamond drilling. During 2005, field crews will be on the Ice River, Greenland Creek and Hot Punch properties completing geological mapping and soil sampling prior to confirming drill targets for 2006.

In the Yukon, Eagle Plains holds the McQuesten gold claims, the Sprogge bulk-tonnage gold prospect, and Ice, base-metal properties. Eagle Plains is also active within the Yukon's Tintina Gold Belt where it holds a 100% interest in 4 intrusive-related gold properties.

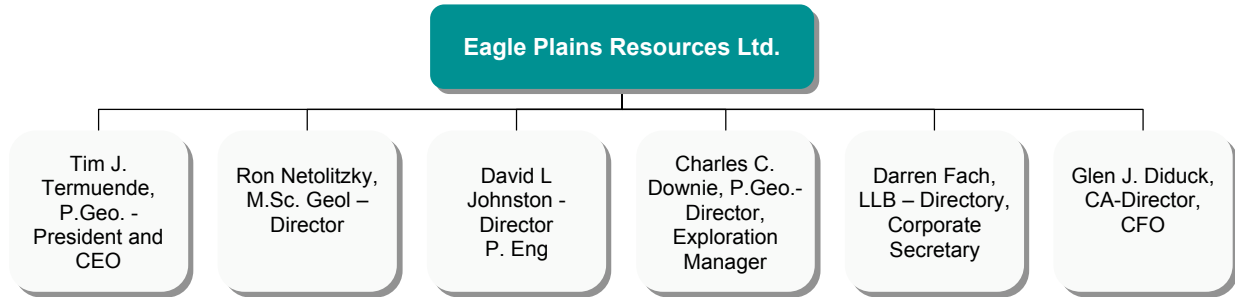
In the Northwest Territories, Eagle Plains is conducting a joint exploration program with Geological Survey Canada and the NWT government. A group of prominent geological experts systematically assessed the economic and exploration potential of more than 65 known base metal showings that have recently been consolidated under prospecting permits by EPL. The analytical phase of this program is now underway.

With a diverse portfolio of advanced projects underway, Eagle Plains has obtained exposure to numerous, varied opportunities to enhance shareholder value. The Company has demonstrated a proven ability to research, acquire, explore and partner properties of merit, generating income and offering dynamic growth opportunities.

2.4 Management Team

The Company's operation has been well guided by a world class management team having strong industry experience in the field of mineral exploration.

Figure 3: Management Structure



Source: Company Website

Tim J. Termuende, P.Geo. - President and Chief Executive Officer

Tim Termuende is a professional geologist with over 25 years of experience in the mineral exploration industry. He currently holds the position of the President and Chief Executive Officer of Eagle Plains Resources Ltd. Tim was one of the founders of the Company, and has been actively involved in the company's affairs since its inception in 1992. Since earning his degree in Geological Sciences at the University of British Columbia in 1987, Tim has worked on exploration projects throughout North, Central, and South America, and has also inspected mineral deposits in the former Soviet Union. Tim has been continuously active in mineral exploration throughout western Canada since 1976, and currently oversees a broad range of ongoing exploration projects located throughout British Columbia and the Yukon Territory.

Ron Netolitzky, M.Sc. Geol – Director

Ron Netolitzky received his B.Sc. from the University of Alberta and completed his Masters in Science at the University of Calgary, both in Geological Sciences. Currently the President and CEO of Viceroy Exploration Ltd., he is an officer and director of a number of public mining companies involved in mineral exploration in Western Canada and Argentina. Ron was elected to the Eagle Plains Resources Board of Directors on May 18, 2004.

David L Johnson, P. Eng - Director

Johnston is a professional engineer who has held senior management positions at Cominco Ltd. and Cominco subsidiaries for over 35 years. From 1995 to 1999, David was the president and general manager of Highland Valley Copper Corporation, owning North America's third largest open pit copper mine.

Charles C. Downie, P.Geo.- Director, Exploration Manager

Charles C. (Chuck) Downie, a graduate from the University of Alberta (B.Sc. 1988), has over 20 years experience in mineral exploration and mining. Downie worked with Cominco Ltd. on various exploration projects throughout Western Canada. After leaving the company in 1993, he worked as a geological consultant throughout North, Central

and South America. Downie has been associated with Eagle Plains Resources since 1993 and became the Exploration Manager in 1999.

Darren Fach, LLB – Director, Corporate Secretary

Fach graduated from the University of Manitoba Law School in 1989 and is currently a partner at McLeod & Company in Calgary, AB. His primary area of practice is securities and corporate/commercial law, which include corporate restructuring and finance, private and public company equity offerings and corporate acquisitions and divestitures. He has been a member of the Business Law and Securities subsections of the Canadian Bar Association.

Glen J. Diduck, CA-Director, Chief Financial Officer

Glen J Diduck B.Comm. C.A. is a self-employed Chartered Accountant involved in public practice since 1979. His practice has included accounting, auditing and taxation in the mining sector, auditing of public companies and advising on corporate governance. Glen has been a director of the Company since October 1, 1996.

2.5 Reorganization Plan

Eagle Plains recently announced its plan to spin off its Copper Canyon, Abo and Severance properties, which will be transferred to a new company, incorporated under the name Copper Canyon Resources Ltd. With this, EPL will transfer \$0.60 million cash to Copper Canyon to provide working capital and exploration funding. The reorganization is designed to improve the valuation of these properties, simplify ownership and enable EPL to separately finance and develop its other assets, and reduce stock dilution.

3. Industry Analysis

3.1 Mining

A strong rebound has occurred in the mining and exploration sectors since 2003 and all signs indicate continued growth in the year 2006. Exploration levels have significantly increased and major mine development programs are at or near approval stage. Also, several major mineral deposits are advancing to development stage. Commodity prices in the world markets are at an all time high for both base and precious metals.

High prices have been primarily driven by the demand for minerals in Asia, and in particular China, where very strong economic growth levels are being experienced. The current mining cycle is now projected by many mining analysts to have the potential to be long in duration, possibly up to 10 years or more, in comparison to historical shorter growth cycles.

Of particular importance to Yukon's mining industry is the price of mineral commodities such as gold, silver, zinc, lead, copper, molybdenum and tungsten. This directly relates to the size, number of deposits and potential for future development of sites hosting these mineral commodities. Eagle Plains has been granted the exclusive exploration rights for a period of three years to a 2,387 sq. km. of land area located east of the Yukon/NWT Territorial border, considered to be prospective for the presence of large carbonate-hosted silver-lead-zinc deposits. The area was once subject to extensive exploration during the 1970s and early 1980s, including numerous drilling programs, dozens of grassroots examinations and thousands of individual claims held by various junior and major exploration companies like RTZ, Placer Dome Inc., Bethlehem Copper, Cominco, Noranda, Amax, Serem and others. Eagle Plains now has 100% control of the entire area, complete with all public data associated with the millions of dollars of exploration work. Recent announcements regarding the proposed Mackenzie Valley pipeline and improving base-metal prices imply that the entire area must now be looked on in a new economic framework. Eagle Plains has \$700,000 budgeted for their 2006 Mackenzie Valley work program.

As for precious metals, the price of gold continued to rise in 2006 at US\$682/ounce. Silver also kept pace with price increases of gold, ending at U\$14.07/ounce on May 5, 2006. This has generated continued interest in the precious metal sector. Prices for these precious metals are expected to show continued strength in 2006.

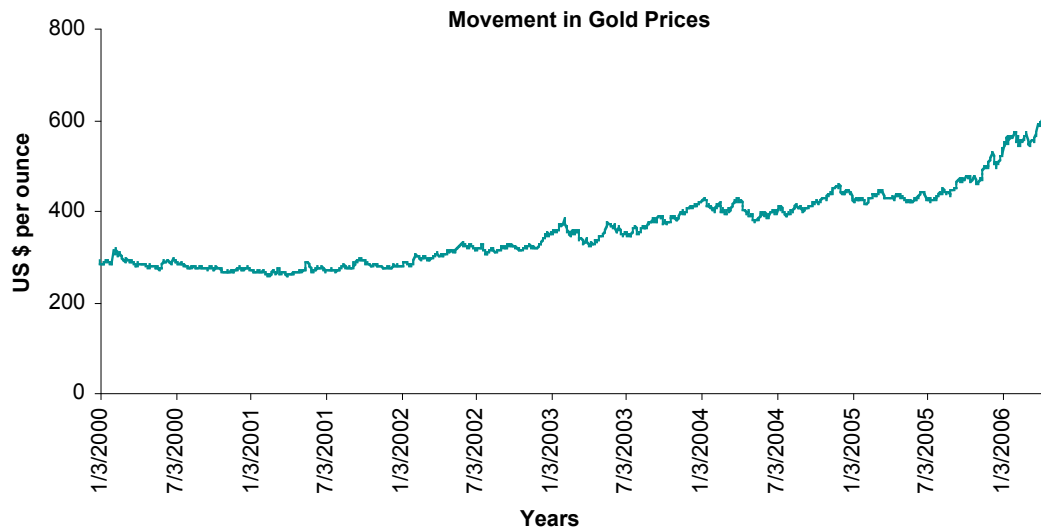
3.2 Gold

The price of gold is also of particular importance to placer mine operators. However, increases in the prices have been somewhat offset by increased costs associated with the rising price of fuels. Base metals have also demonstrated sharp price increases as a result of strong global market demand and a positive future outlook.

Gold has been internationally mined in countries such as Australia, Canada and South Africa. In Australia, the industry produces about 300 tonnes per annum of which three quarters come from Western Australia, while the average production of 2 tonnes per annum in India by The Hutti Gold Mines Ltd, the only gold producer in India. Total global production of gold is about 2400 tonnes.

The prices of gold have increased from US\$289 per ounce in January 2000, to its current price of US\$671.5 per ounce (as of May 4, 2006).

Exhibit 4: Movement in Gold Prices



Source: Bloomberg

Several factors are driving this price up and will continue to do so in foreseeable future. Some of these are presented below:

- **Supply vs Demand:** Demand for gold is at record levels and running at 4000 tonnes per year while mine production has been steady at 2250 tonnes per annum (Source: World Gold Council). The lower gold production vis-à-vis demand is due to weakening of the US\$ on the back of extreme debt levels and deficit spending (US \$450 billion on the war on terrorism), foreigners withdrawing their US investments, a weak US economy and negative real interest. These are some of the drivers pushing the gold price upwards.
- **Growth in Demand for Jewelry:** In spite of the convergence of diamond and palladium, the demand for gold jewelry has seen a regular growth year on year. Countries which are primary responsible for this growth are India, China, Italy, Turkey and USA. The US, which accounts for 10 % of world gold demand, is also one of the markets where public taste in gold jewelry is enjoying a recovery. The renewed interest in gold also extends to Japan, a market which showed a 19% increase in demand.
- **Increase in Demand for Exchange Traded Paper Backed Products:** Gold can be purchased on any listed stock exchange of the world like London Stock Exchange, Australian Stock Exchange and New York Stock Exchange. With the launch of ETF, the volumes grew by 53% in tonnage terms and by 67% in Dollar terms. In tonnage terms, growth was seen in India (up 14%) and Saudi Arabia (up 12%). Other countries like China, Taiwan, UAE and Turkey also saw rise in jewellery demand in the range of 6-8%.

Exhibit 6: Factors Affecting Gold Prices



Source: Analyst Research

3.2.1 Strong demand from Asia

- **India**

India's share of global gold demand is about one-and-a-half times that of US, though its GDP is only 1/20th of the US GDP. With its high level of gold consumption, India accounts for 18% of the global demand for gold annually, while its share of global GDP (in nominal dollar GDP) is only 1.6%. During the year 2005, overall consumer demand in India was 17% higher in tonnage terms than the year before. In rupee terms, this was equivalent to a 25% increase, bringing the value of gold demand in India to a successive annual record. Jewellery demand also experienced a second successive annual record of over 20% growth in rupee terms over 2004. This translated to an increase of 14% in tonnage terms, accounting for 589 tonnes. In our view, gold prices may extend their rally for at least another two to three years, supported by strong physical and investment demand, supply constraints and world political tensions. Gold prices have more than doubled in the past three years and surged by 25% so far in 2006 to hit a 25-year high of \$671.50 an ounce this month.

- **China**

The buoyant Chinese economy and the success of the K-gold jewellery promotion saw consumer demand in Mainland China rise by 8% in tonnage terms in 2005 with an 8% increase in jewellery off take and a 20% rise in net retail investment. The strong economy, the success of K-gold and the growth in the number of people willing and able to buy high-quality jewellery should support demand growth in 2006.

- **Middle East and Turkey**

Demand for gold in Middle East stood at 9% in 2005 and also made a new record jewellery off take in the UAE (96 tonnes). Vibrant economies on the back of high oil prices, construction activity and ever increasing tourist numbers in the Gulf countries, combined with sustained and increased promotion by the gold trade and the World Gold Council, underpinned off take for much of the year, until the rising prices curtailed demand in the last few weeks of 2005.

3.2.2 Supply

During the year 2005, supply of gold increased by 15% as compared to 2004 on the back of higher official sector sales. Although a number of new mines have come on stream in recent years, mine production in 2005 was only 1% (31 tonnes) higher than 2004. At 663 tonnes, net central bank selling reached record levels. The 41% increase in net central bank selling compared to 2004 was due to the higher net level of annual sales (500 vs 400 tonnes) under the terms of the second Central Bank Gold Agreement (CBGA 2) compared to the first Agreement and the fact that there was no significant buying.

3.3 Uranium

Australia has the world's largest uranium reserves and caters 40% of the planet's known supply. Almost entire amount of the uranium mined is exported, but only under strict safeguard guidelines of International Atomic Energy Agency to satisfy the Australian people and government that no part of it is used in nuclear weapons. The principal use of uranium is to fuel nuclear power plants for generation of electricity. Currently, over 400 nuclear reactors across the world produce approximately 17% of the world's total power generation. In spite of Australia's huge reserves, Canada remains the largest exporter of uranium ore with mines located in Athabasca basin in northern Saskatchewan. Cameco, the world's largest, low-cost uranium producer accounting for 18% of the world's uranium production, operates 3 mines in the area.

3.3.1 Demand

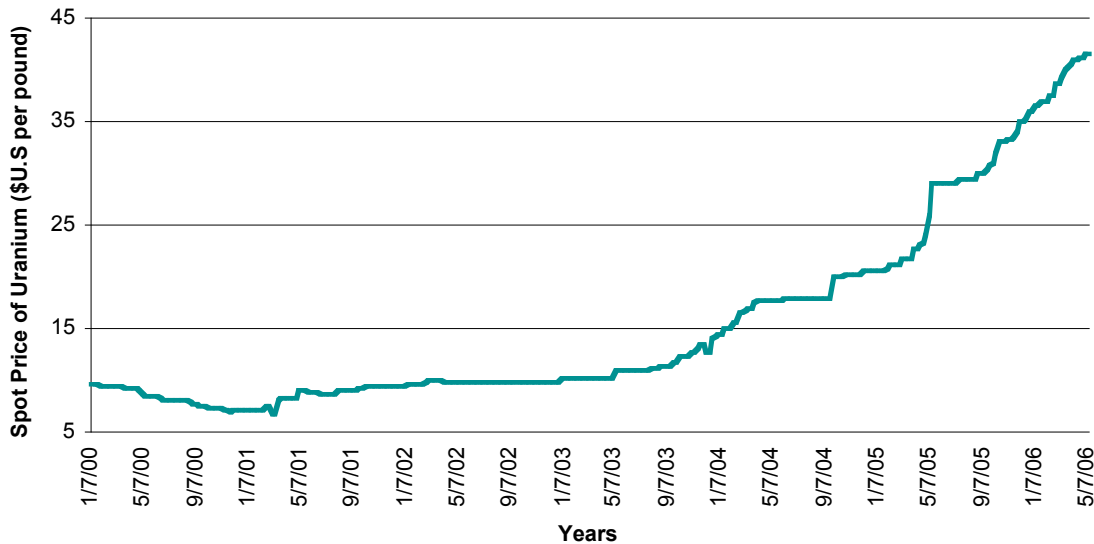
The demand for uranium is directly linked to the level of electricity generated by nuclear power plants. Western world's annual uranium fuel consumption has increased from approximately 56 million pounds U3O8 in 1980 to about 160 million pounds in 2004. Nuclear electricity generation worldwide is growing with the number of new reactors coming up in both western and eastern world far outnumbering the number of units being closed down. Besides, the existing reactors are continually being operated at higher capacity. Reactors in the United States, for example, have increased operational capacity from an average of 58% in 1980 to 90% in 2000. With the increase in demand for the fuel by the reactors, it is estimated by Cameco Corporation (2004 Annual Report) that annual uranium fuel consumption in the western world will reach 210 million pounds in 2014.

3.3.2 Supply

Uranium supply sources include primary mine production and secondary sources. Principal primary producers of uranium include Cameco (20% of global mine production in 2004) and Cogema Resources (approximately 15% of production), both of which produce principally from deposits in the Athabasca Basin of northern Saskatchewan. Since 1985, western world uranium mine production has been less than utility uranium consumption, and is currently less than half of consumption. The resulting shortfall has been covered by several secondary sources including excess inventories held by utilities, producers, other fuel cycle participants, reprocessed uranium and plutonium derived from

used reactor fuel, and uranium derived from the dismantling of Russian nuclear weapons. These secondary sources will decline in importance as excess inventories and recycled uranium from nuclear weapons are progressively consumed over the next decade, resulting in the need for further primary mine supply.

Exhibit: Spot prices of Uranium



Source: Analyst Research

3.4 Outlook for 2006

Gold price movement has begun the year in a similar pattern to the one witnessed at the end of 2005 with price volatility leading to strong demand for institutional investment in gold but a cautious approach to jewellery purchasing. Term jewellery demand is expected to recover and resume growth once the price has stabilised,

On the supply side, more positive remarks by central banks towards gold have prompted market speculation of new central bank buying. The WGC is aware of new interest in gold by certain central banks but, in view of central banks’ long decision-making processes, does not expect immediate substantial purchases.

In consonance with gold, silver prices have increased from approximately US\$ 5.41 per ounce in 2000 to its current price of US\$ 13.98 per ounce. We believe that silver prices would further rise to US\$ 30-35 per ounce, or higher, in the next 3-5 years.

In 2000, uranium prices reached 26-year lows of less than \$7 US per pound uranium due to increased availability of secondary supplies, short term lower demand and increased inventory sales. The spot prices has increased to \$41.50 US per pound (as of May 15, 2006), and we believe, the long term uranium market outlook remains positive with increased consumption and future drying up of secondary uranium sources. Given the lead time necessary to find and develop new mines, the projected gaps in both supply and future depletion of existing high grade uranium deposits means that exploration needs to take place in the shorter term. We expect the new uranium products to come from deposits in Canada, Australia, the United States and Kazakhstan. We believe that these deposits are of lower grades than the high grade deposits in the Athabasca Basin, and it is also expected that the new supply will come at higher cost, which is expected to put

further upward pressure on the uranium price over the next ten years and will increase both the need to find and exploit additional high grade deposits.

4. Recent Developments

Eagle Plains/Blind Creek Complete Winter Mobilization to Blende Silver/Base-Metal Deposit

EPL and Blind Creek Resources Ltd. jointly announce that they have successfully completed the winter mobilization of lumber, diamond drilling equipment, fuel and other supplies to the Blende property, located in central Yukon approximately 65 NE of Keno. Over 50 tons of equipment and 35,000 litres of fuel have been placed on the property in preparation of a 10,000m (33,000') drilling campaign to be completed during the 2006 field season. The first-phase budget for this work has been set at \$1,500,000.

Eagle Plains Joins Saskatchewan Uranium Play

EPL has recently responded to a unique exploration opportunity by staking Claim Blocks S-108185 and S-108186 (the "Eagle Lake" property), located 28 km southeast of Cameco's Key Lake mining operation in north-central Saskatchewan, Canada. The claims cover 20,167 acres (8,165 ha.) containing uranium mineralization discovered by Great Plains Development Company of Canada Ltd. during the 1969 Athabasca Basin uranium rush. The property lies 30 kilometres south of the edge of the Athabasca Formation. Geologists then managing Great Plains' multi-million dollar exploration programs are now working as consultants and associates of Eagle Plains.

EPL's focus will be on exploration of uranium deposits in north to northwest-trending faults which are interpreted to have formed structural traps where uranium mineralization may have been preserved.

Eagle Plains intends to launch an aggressive exploration program including diamond drilling during the 2006 field season.

Eagle Plains Receives \$1,000,000 Share Payment for Copper Canyon

EPL has received the third tranche of four annual share issuances from NovaGold Resources Inc. as required under the Copper Canyon Option Agreement. A total of 74,074 NG shares were received, with a market value at close of trading on February 24th of \$1,086,665.

NovaGold may earn a 60% interest in the Copper Canyon project from EPL by completing C\$3 million in exploration expenditures, issuing a total of 296,000 shares of NovaGold and making property payments totaling C\$250,000. NovaGold may earn an additional 20% interest in the project for a total of 80% by paying Eagle Plains C\$1 million and completing a feasibility study by September 2011.

Eagle Plains Acquires Additional Exclusive Exploration Rights to NWT Lead-Zinc-Silver Metals District

EPL has been granted the exclusive exploration rights to an additional 255,000 acres (1,031 sq. km) of land east of the Yukon/NWT Territorial border, considered to be prospective for the presence of large carbonate-hosted silver-lead-zinc deposits. The rights occur in the form of NWT Government-granted "prospecting permits" which enable the holder to complete exploration activity over entire individual map-sheets for a period of three years, with the exclusive right to acquire formal title within these selected areas. These grants are in addition to existing rights held by EPL making the total control area in excess of 2,387 sq. km. The consolidation of the entire project area provides Eagle Plains with an unprecedented opportunity to explore and develop a world-class metallogenic belt which has been dormant for three decades.

Eagle Plains Releases Inferred Resource for Sphinx Molybdenum Project

EPL has commissioned a N.I 43-101 compliant technical report for it's 100% controlled Sphinx property, located 60 km west of Kimberley, BC. Barry Price, P.Geol. It has recently submitted a technical report in which price outlines an Inferred resource of 62,005,615 tonnes grading .035% Mo, using a cut-off grade of .01% Mo. This current inferred resource represents 47,844,630 lbs of contained molybdenum metal. The estimate is based on 14 holes drilled in 2005 by Eagle Plains and incorporates data from 10 holes drilled in 1980 and 1997 by previous operators. The inferred resource is open in two directions and to depth, and is considered to have significant potential for expansion. The project is being advanced as a bulk-tonnage, open-pit target.

5. Risk Factors

The Company risks and limitations are outlined below:

Exhibit 6: Risk Factors



Source; Analyst Research

- **Dependent upon Key Management Personnel:** The Company's business of precious exploration is dependent to a large extent on its ability to attract and maintain qualified key management personnel. Competition for such personnel is intense in the industry. However, there is no guarantee that the Company will be able to attract and retain such key hands.
- **Need for Additional Capital:** The Company believes that it has sufficient funds to undertake its planned operations and exploration projects. If the planned programs are successful, additional financing will be required to continue exploration and/or to develop the mineral properties identified. Inability to secure such capital may hinder the Company's operations and result in possible loss to properties.
- **Dependability on Third Party:** The Company does not have its own manufacturing operations. It also does not have any intention to open its own manufacturing unit. This implies that it has to rely on third party for the manufacturing process.
- **Competition:** The Company is facing competition from various other junior exploration players with sound financial position.

6. Future Outlook

Eagle Plain's primary focus in 2006 will be on its zinc properties, in response to the dramatically improving worldwide demand that is now leading to record metal prices. EPL has been granted the exclusive exploration rights for a period of three years to 2,387 sq. km. of land east of the Yukon/NWT Territorial border, considered to be prospective for the presence of large carbonate-hosted silver-lead-zinc deposits.

Furthermore, NovaGold has expressed interest in Copper Canyon. We wonder at what point NovaGold may make an offer to EPL for its interest in Copper Canyon. The mineralization at Copper Canyon has higher gold values and begins at surface, whereas the principal Galore Creek deposit will require substantially more development work to remove the overburden.

However, NovaGold has announced a five-year exploration strategy that it intends to execute concurrent with the feasibility, permitting and construction of the mine. A case could be made to take EPL out of the equation as early as possible in the projects' development. Any such move could be an early "win-win" for EPL shareholders.

We believe that such announcements from JV partners will enhance the revenue earning opportunities for EPL.

In addition, EPL has a management team of considerable experience and success in precious metal exploration industry. The Company expects the gold and silver markets to remain strong in the near future. This provides for considerable growth opportunity and increased earning avenues to the Company.

7. Annexure (s)

7.1 Company Contact Information

EPL's head office is based at:

Suite 200, 16 – 11th Ave. S.

Cranbrook, BC V1C 2P1

Toll Free: 1 866 HUNT ORE

(486 8673)

Local: (250) 426-0749

Fax: (250) 426-6899

Email: info@eagleplains.com

Investors Relations:

Mike Labach

Toll Free: 1-866-Hunt Ore (486-8673)

7.2 Financial Highlights

To date, Eagle Plain Resources Limited has reported no revenues as it is a development stage company. Net loss before investment income (loss) and future income taxes till 31 December 2005 amounted to Can\$2,675,542, while net loss for the year stood at Can\$1,776,058 compared to Can\$501,277 posted in the previous year.

EPL is a development stage company and engaged in the business of exploring mineral resources. It requires funds for investment in exploration, which is funded through joint venture participation to leverage their development.

7.3 Properties

Exhibit 7: EPL Properties

Eagle Plains Resources



Source: Company Website

Analyst's Statement: "I have prepared this report, and the content within it, including all opinions, are solely my own."

This report and other reports regarding this company and others are at:

<http://www.investrend.com/articles/secondlevel.asp?level=182>

Add in Company info here:

EPL's head office is based at:

Suite 200, 16 – 11th Ave. S.

Cranbrook, BC V1C 2P1

Toll Free: 1 866 HUNT ORE

(486 8673)

Local: (250) 426-0749

Fax: (250) 426-6899

Email: info@eagleplains.com

Investors Relations:

Mike Labach

Toll Free: 1-866-Hunt Ore (486-8673).

The company's **InvestorPower™** page is at <http://www.investrend.com/company/list.asp?sPathParam=yes>

Shailesh Dhuri, MBA, is a MBA from Indian Institute of Management, Bangalore.

The **analyst's biographical** details are at <http://www.investrend.com/articles/secondlevel.asp?level=238>

Investrend Research and Investrend Research Syndicate, Div., Investrend Communications, Inc., 603 W. 13th Street, Suite 1A-277, Austin, Texas 78701 Phone (718) 896-5060, Fax (718) 896-5316, e-mail: contact@investrend.com . Web site: www.investrend.com and www.investrendresearch.com.

Information, opinions or ratings contained in this report are submitted solely for advisory and information purposes by the qualified professional analyst. Investrend Research provides analyst facilitation, report publication and distribution services only. The information used and statements of fact made have been obtained from sources considered reliable but neither guarantee nor representation is made as to the completeness or accuracy. No representation whatsoever is made by Investrend. Such information and the opinions expressed are subject to change without notice. This report or study is not intended as an offering or a solicitation of an offer to buy or sell the securities mentioned or discussed. Please read full disclosures at <http://www.investrend.com>. Neither Investrend nor the analysts apply "recommendations" to any reports nor the companies covered. Any usage of the word "recommendation," if any, is to be defined as a "rating" only.

Click here for Ratings Definitions:

<http://www.investrend.com/articles/secondlevel.asp?level=253>

Enrollment fees in Investrend's unique independent research program, which may be paid by anyone wanting to enroll a company for professional coverage, vary, from \$5,780 for an Investrend **Target Report**, \$9,950 for an **Investrend Focus Report**, \$19,640 for a **Criterion Report**, \$26,800 for continuous **Benchmark Coverage**, \$36,890 for full **Institutional Coverage**, and to \$46,840 for Wall Street comprehensive coverage, all continuous coverages including **Research Reports**, **Research Updates** and **ResearchNotes**. A **Company of the Week Webcast** is \$3,940. The enrollment fees stated above for the **Coverage Category** described on the **introductory page** are being paid by the company.

IMPORTANT: Investrend Research has been a pioneer in providing independent subscription-based and enrollment-based equities research publishing and distribution program championing higher standards of

"accessibility", "scrutiny" and "disclosure" since 1996, with *procedures in place to lessen or eliminate conflicts of interest commonly associated with investment banking research*, including prohibitions on anyone associated with Investrend Research from owning or trading in the stocks of companies for which reports have been issued. We are members of the standards-based FIRST Research Consortium, members of the Standards Committee and subscribers to the "[Standards for Independent Research Providers](#)."



For additional information regarding professional standards and ethics, click on:

<http://www.firstresearchconsortium.com>

Investrend Research also subscribes to the principles contained in the Analyst/Corporate Issuer Guidelines jointly promulgated by the **CFA Institute** and the **National Investor Relations Institute**, described at:

<http://www.cfainstitute.org> and <http://www.niri.org>

To read what others say about the differences in investment banking research and the Investrend Research model, please read the following from the National Association of Security Dealers (NASD), the National Investor Relations Institute (NIRI), Shareholder Value Magazine, the New York Times, Dow Jones, and others at:

<http://www.investrend.com/articles/secondlevel.asp?level=233>

Professional, credentialed analysts qualified in the Investrend Research program are paid fully in advance for their initial reports by Investrend to eliminate any pecuniary interest. Analysts are under contract to Investrend to provide their reports solely for the benefit of the public, and not for Investrend, any covered company or any enrollee, and each agrees to adhere to the ethics and standards of the CFA Institute (<http://www.cfainstitute.org>). All reports are solely the product of the analyst, and Investrend acts only as an enrollment facilitator; and after the reports are completed, publishes and distributes them via Investrend Research Syndicate as a service to the analyst and the public.

For biographies of qualified analysts and a complete description of the process, click on:

<http://www.investrend.com/articles/secondlevel.asp?level=238>

<http://www.investrend.com/articles/article.asp?analystId=0&id=7284&topicId=238&level=238>

Investrend Forums, Investrend Broadcast and **Investrend Information**, separate divisions of Investrend Communications, Inc, along with **Company of the Week™**, **FirstAlert Network™**, and **AnalystBroadcast Network**, from time to time, may or may not include **Investrend Research** covered companies among its corporate, affiliated, sector, analyst and investor forums, broadcasts, seminars and other programs, on a fee basis, but such participation, if any, may not influence the professional analyst coverage in any research program. If and when fees are associated with such participations, those fees, if any, are fully disclosed in connection with the participation.

FinancialWire™ is a proprietary independent newswire product of Investrend Information, and automatically includes companies enrolled in the Investrend shareholder empowerment and financial intelligence platforms within its coverage universe, but such news coverage is independent of such platforms, and there is never a fee associated with FinancialWire news. FinancialWire does not provide press release services to anyone, nor is its editorial content subject to review by anyone.

OPEN INVITATION: Since its beginnings, Investrend has held public hearings, offered full access to its policies and procedures to any and all individuals, organizations, regulatory bodies and others, and has held public hearings inviting comments on its procedures. In addition, anyone with a suggestion as to

improvements in our policies and procedures are invited at any time to contact us at contact@investrend.com or to click on: <http://www.investrend.com/ContactUs.html>.

© Copyright, 2006, by Investrend Research, div., Investrend Communications, Inc.